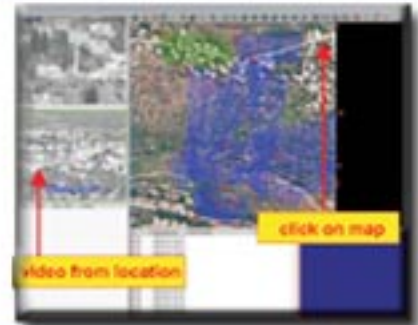


Hyper Video Matrix

- Orwell 2K system built by multiple Video clusters
- Each video cluster consists of fixed and PTZ cameras working together to detect and trace objects in secured areas
- Able to work with analog and IP cameras simultaneously

Video access by digital map

An operator investigating a certain portion of the map can simply click the digital map to view video from a camera assigned to the location



PTZ control options

Control-click on target in digital map or fixed camera window will instruct PTZ camera to track target. Control PTZ cameras by using virtual joystick (top left of the image). Each PTZ camera can zoom to allow close view of the target.



Access to PTZ video through digital map or fixed camera window

To focus PTZ camera on selected place of interest: either double click on selected location of digital map or single click on location in fixed camera window



Video access by matrix

To receive video from a certain camera, enter the call number of the desired camera.

